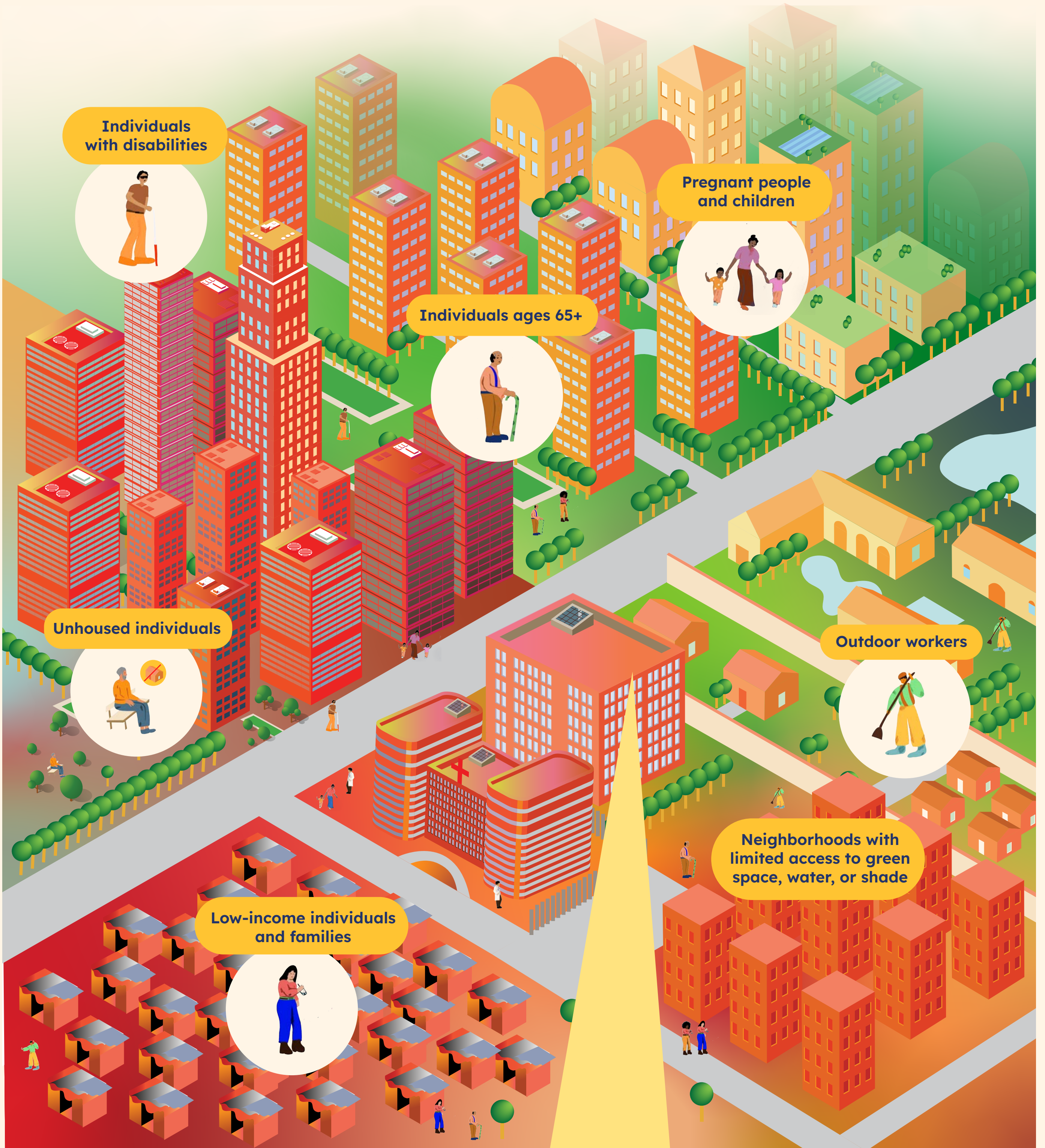


Identifying Heat-Vulnerable Communities

Everyone is vulnerable to heat illness and heat stroke, but some communities are disproportionately harmed by urban heat due to higher temperatures in their neighborhood, a lack of resources or barriers to accessing existing resources, or other factors.

Understanding which communities are at the greatest risk of harm from heat and how this overlaps with air temperature distribution across your city will help you direct resources before, during, and after heat waves.



Vulnerability assessments often look at age and income, among other data, and are sometimes overlaid with analysis of tree canopy cover, rooftop albedo and daytime and/or nighttime temperatures.

